



## Used Komatsu PC300-7 Excavator for Sale | Reliable Hydraulic Crawler Digger from China

Our Product Introduction

for more products please visit us on [yuweimachinery.com](http://yuweimachinery.com)

### Basic Information

- Place of Origin: Japan
- Brand Name: Komatsu
- Certification: Provided
- Model Number: PC300-7
- Minimum Order Quantity: 1 Unit
- Price: to be negotiation
- Packaging Details: Nude
- Delivery Time: 15 work days
- Payment Terms: T/T
- Supply Ability: 5 Units 30 Days

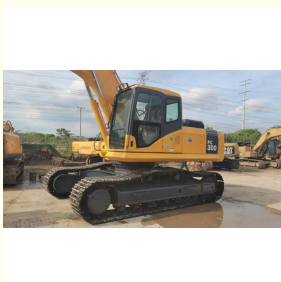


### Product Specification

- Brand: Komatsu
- Location: Shanghai China
- Color: Original
- Weight: 31.2t
- Transport Length: 11.14m
- Transport Width: 3.19m
- Transport Height: 3.28m
- Engine Power: 180 KW
- Bucket Capacity Min.: 1.4m<sup>3</sup>



### More Images



## Product Description

### Used Komatsu PC300-7 Excavator for Sale | Reliable Hydraulic Crawler Digger from China

1. WITH **25 YEARS MANUFACTURING** AND EXPORTING EXPERIENCE
2. ALL PRODUCTS **WARRANTY 12 MONTHS** WITH FREE PARTS
3. OFFER **BEST PRICE** AND **COST-EFFECTIVE SHIPPING**
4. PROVIDE **24-HOUR** AFTER SALE SERVICE

#### Used Komatsu PC300-7 Excavator for Sale – Heavy-Duty Hydraulic Machine Exported from China

Looking for a reliable and high-performance excavator for construction, mining, or earthmoving? This **used Komatsu PC300-7 hydraulic excavator** delivers excellent digging force, fuel efficiency, and long-term durability.

Sourced directly from China, this machine has been **fully inspected, tested**, and is ready for global export. It's an ideal choice for contractors needing a robust crawler excavator at a competitive price.





## Specification

|                  |                |
|------------------|----------------|
| Product Name     | <b>Komatsu</b> |
| Operation Weight | 31.2t          |
| Location         | Shanghai,China |
| Engine           | Original       |
| Power            | 180kW          |
| Place of Origin  | Japan          |
| Length           | 11.14m         |
| Width            | 3.19m          |
| Height           | 3.28m          |

## Main Products

|      | Product     |  |
|------|-------------|--|
|      | Type        | Model  |
|      | Komatsu     | PC01 PC10MR PC35MR PC55MR PC130-7<br>PC200-6.PC200-7 PC200-8 PC210LC-7.PC220-6<br>PC220-8 PC300P PC350-7 PC400-7.PC400-8 |
|      | Caterpillar | 303.5E 308D 320B 320BL 320C 320D 325B 325D<br>330B 330BL 312D 329D 329EL336EL 349E                                       |
| Used |             |  |



|  |             |   |
|--|-------------|---|
| Excavator  | Hitachi     | ZX55UR ZX60 ZX70-3 ZX75 ZX120 ZX130 ZX200 ZX210 ZX350-3 ZX350-5G EX60-5 EX120-5 EX100-3 EX200-1 EX200-2 EX200-3 EX200-5 EX220-5 |
|  | Doosan      | DH55-7 DH60-7 210W-7 220LC-7 300LC-7 DX55 DX55-9C DX60 DX140LC DX225 DX300-9C   |
| Used Bulldozer   | Caterpillar | D3G D3C D4C D4H D4K D5K D6H D6M D6R D7R D8R D8N D8H D9N D9L   |
|  | Komatsu     | D65EX D85A D115A-2 D155A-5D275 D375 D475  |
|  | Shantui     | SD13 SD16L SD16T SD22 SD32  |
| Used Wheel Loader  | Caterpillar | 936E 938G 950H 950GC966C 966D 966H 980F 980G 980H 988G 988H   |
|  | Komatsu     | WA320-5 WA380-5 WA380-6 WA470 WA500 WA600   |
| Backhoe loader   | JCB         | 3CX 4CX   |
| Used Grader  | Caterpillar | 12G 14G 14H 16G120K 140K 140H   |
| Dump trucks  | HOWO        | 6x4(336) 6x4(375) 8x4(375)  |
| Concret pump, Forklift, Compactor, Spare parts, Suction Sewage Truck, Tractor... |             |   |

## Company Information



We have been engaged in the second-hand construction machinery sales industry for more than 25 years.

Our main business is construction machinery, such as crawler excavator, wheelexcavator, bulldozer, loader, grader, forklift, dump truck, transport truck, truck mixerconcrete pump, backhoe loader, truck crane, etc.

With 25 years of industry experience.

24-hour online service.

Massive inventory.

The best price and high-quality car conditions.

After the order is placed with the advance deposit, 7-15 days for goods preparationand efficient delivery.

One year after-sales service period.

## Packing & Delivery

**Container**  
**Bulk Cargo**

## Flat rack



If you are looking for the most cost-effective, best service and high-quality machinery, please contact us immediately!



**Shanghai Yw Engineering Machinery Co., Ltd**



13818031847



yw1211@yuweimachinery.com



yuweimachinery.com

NO.680 YONGDE ROAD, MINHANG DISTRICT, SHANGHAI 200241, CHINA