



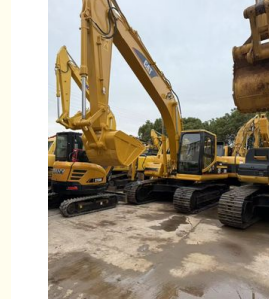
CAT 320BL Used Excavator with Large 400L Fuel Capacity

Our Product Introduction

for more products please visit us on yuweimachinery.com

Basic Information

- Brand Name: CAT
- Model Number: 320BL

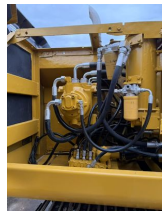
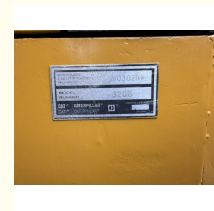


Product Specification

- Arm Cylinder: All Good, No Leak
- Moving Type: Crawler Hydraulic Excavator
- Unique Selling Point: Fully Hydraulic System
- Model: 320D
- Maximum Digging Height: 4350mm
- Key Words: Used Komatsu Pc400 Excavator
- Fuel Tank: 130L
- Working Hours: 890
- Fuel Capacity: 400 L
- Size: Medium
- Machine Type: Used Crawler Excavator
- Used Hours: 3003.4 Hours
- Rotation Speed: 12rpm
- Power: 138kw
- Arm Length: 2.9 M



More Images



Product Description

The Caterpillar (CAT) 320BL is a robust and reliable hydraulic excavator designed for heavy-duty construction, earthmoving, and excavation tasks. Built with Caterpillar's signature durability and efficiency, this machine offers powerful performance, excellent fuel efficiency, and smooth hydraulic operations.

Key Features & Specifications:

Model: CAT 320BL

Brand: Caterpillar (CAT)

Engine Power: High-performance diesel engine for superior efficiency

Hydraulic System: Smooth and responsive hydraulic control for precise operations

Operating Weight: Designed for stability and heavy lifting

Track System: Heavy-duty steel tracks for enhanced traction and maneuverability

Cabin Comfort: Ergonomically designed operator cab for maximum comfort and visibility

Versatile Attachments: Supports buckets, hammers, grapples, and other attachments for various applications

Applications:

Our Product Introduction



Shanghai Yw Engineering Machinery Co., Ltd

13818031847

yw1211@yuweimachinery.com

yuweimachinery.com

NO.680 YONGDE ROAD, MINHANG DISTRICT, SHANGHAI 200241, CHINA

for more products please visit us on yuweimachinery.com