



Japan Used Wheel Loader For Smooth And Moving Type Operations CAT 973

Our Product Introduction

for more products please visit us on yuweimachinery.com

Basic Information

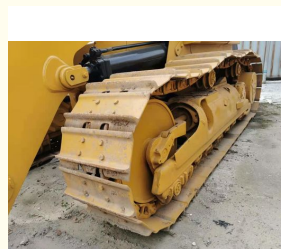
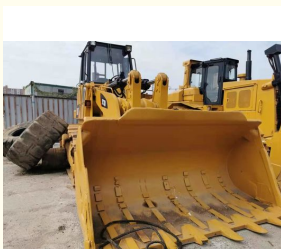


Product Specification

- Applicable Industries: Farms, Retail, Construction Works
- Product Type: Mechanical Machinery
- Tire Size: 26.5-25
- Mode Of Transport: Ocean Freight/ Air Freight/ Land Freight
- Drive Type: 4WD
- Gross Power: 220 Hp
- Core Components: Pressure Vessel, Motor, Engine
- Original: Japan
- Highlight: **Smooth Used Wheel Loader, Moving Type Used Wheel Loader, Japan Used Wheel Loader**



More Images



Product Description:

Our used wheel loader is a mechanical machinery product that is built to last, with a range of core components including a pressure vessel, motor and engine from top brand manufacturers. With its powerful engine and efficient design, this used wheel loader is ideal for a wide range of applications, from construction and excavation to mining and forestry.

One of the standout features of our used wheel loader is its impressive discharge height of 2.746 meters, which means you can easily load and unload materials with ease, no matter what the job requires. And with its sturdy construction and reliable performance, you can trust that this used wheel loader will deliver the results you need, every time.

Whether you need to transport your used wheel loader by ocean freight, air freight or land freight, we've got you covered. Our used wheel loader is designed to be easy to transport and maneuver, making it ideal for a variety of different working environments. So why wait? Contact us today to learn more about our top-quality used wheel loader and find out how it can help you take your construction or industrial business to the next level.

Features:

Product Name: Used Loader

Drive Type: 4WD

Original: Japan

Applicable Industries: Farms, Retail, Construction Works

Mode Of Transport: Ocean Freight/ Air Freight/ Land Freight

Moving Type: Wheel Skid-Steer Loader

Looking for a reliable and durable Used Wheel Loader? Our Used Loader is the perfect choice. With 4WD drive type and original manufacturing from Japan, this loader is suitable for various industries including farms, retail, and construction works. We offer different modes of transport including ocean freight, air freight, and land freight. The wheel skid-steer loader provides easy and efficient movement for your needs. Choose our Used Wheel Loader for your next project.

Technical Parameters:

| | |
|-------------------|--|
| Condition | Used |
| Core Components | Pressure Vessel, Motor, Engine |
| Year | 2005 |
| Mode Of Transport | Ocean Freight/ Air Freight/ Land Freight |
| Marketing Type | Used Wheel Loader |
| Working Weight | 3121 KG |
| Gross Power | 220 Hp |
| Drive Type | 4WD |
| Tire Size | 26.5-25 |
| Product Type | Mechanical Machinery |

Applications:

One of the most common scenarios for this product is in the construction industry. Used Wheel Loaders are essential in building sites for moving and loading materials such as sand, gravel, and concrete. The Used Wheel Loader can also be used in mining sites for loading ores and rocks into trucks for transportation.

Another scenario where this product can be useful is in the agricultural industry. Farmers can use it to move and load hay bales, feed, and other materials on their farms. The Used Wheel Loader can also be used to clear snow during the winter season.

The Used Wheel Loader can also be used in the waste management industry for loading and transporting garbage and debris. This product can be used in landfills, recycling plants, and other waste management facilities.

The engine brand of this Used Wheel Loader is a Top Brand, which ensures high performance and reliability. The discharge height of 2.746 M is also an advantage, allowing the machine to reach higher and unload materials with ease.

Overall, the Used Wheel Loader is a versatile machine that can be used in various industries and scenarios. Its 4WD drive type, working weight, engine brand, and discharge height make it a suitable machine for many tasks that require moving and lifting heavy loads of materials.

Customization:

If you are looking for a reliable and powerful Used Wheel Loader, we offer customization services to meet your specific needs. Our loaders have a Gross Power of 220 Hp and a 4WD Drive Type, making them suitable for various industries including Farms, Retail, and Construction Works. The Tire Size of our loaders is 26.5-25.

Support and Services:

Our technical support team is available to assist with any issues you may experience with your used loader. We offer a range of services, including:

Remote technical support

On-site technical support

Training and education on loader operation and maintenance

Warranty support

Parts and repairs

To ensure the highest level of support, we recommend that you provide us with your loader's serial number and any relevant information about the issue you are experiencing. Our team will work quickly to diagnose the problem and provide a solution.



Shanghai Yw Engineering Machinery Co., Ltd



13818031847



yw1211@yuweimachinery.com



yuweimachinery.com

NO.680 YONGDE ROAD, MINHANG DISTRICT, SHANGHAI 200241, CHINA