



Diesel Powered Second Hand Caterpillar 966 Front End Loader from Heavy Machine USA

Our Product Introduction

for more products please visit us on yuweimachinery.com

Basic Information

- Place of Origin: Japan
- Model Number: 966 H
- Price: \$20,000.00/units 1-2 units
- Packaging Details: Shipped by Bulk /RORO/Flat Rack/Container.
- Supply Ability: 100 Unit/Units per Month

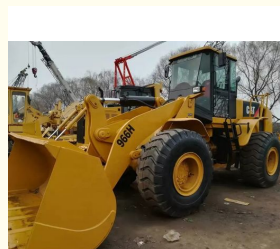


Product Specification

- Applicable Industries: Building Material Shops, Machinery Repair Shops, Farms, Home Use, Retail, Construction Works , Energy & Mining
- Showroom Location: Nigeria, Peru, Kazakhstan, Argentina, Tajikistan, Thailand, Philippines, Colombia, Uzbekistan, Chile, Algeria, South Africa, Kenya, Indonesia, Saudi Arabia, Morocco, Malaysia, Viet Nam, Sri Lanka, Pakistan, Kyrgyzstan, Brazil, UAE
- Type: Front Loader, Mini Loader
- Rated Load: 6 TON
- Machine Weight: 23500 - 24500 Kg
- Hydraulic Pump Brand: Original
- Engine Brand: CAT
- Power: 195
- Machinery Test Report: Provided
- Video Outgoing-inspection: Provided



More Images



Product Description

Specification

item	value
Product Name	Caterpillar 966H
Operation Weight	23698KG
Location	Shanghai,China
Engine	CAT C11 ACERT
Power	195KW
Place of Origin	China
Width	2970MM
Height	3580MM

MAIN PRODUCTS



Company Profile



We have been engaged in the second-hand construction machinery sales industry for more than 30 years.



Professionals do professional things. If you are looking for the most cost-effective,

Our main business is construction machinery, such as crawler excavator, wheel excavator, bulldozer, loader, grader, forklift, dump truck, transport truck, truck mixer, concrete pump, backhoe loader, truck crane, etc

With 30 years of industry experience.

24-hour online service.

Massive inventory

Fast delivery

After the order is placed with the advance deposit, 7-15 days for goods preparation

One year after-sales service period

VIEW





WHY CHOOSE US



With 30 years of industry experience.



Massive inventory
The best price and



After the order is placed with the advance deposit, 7-15 days for

OUR CERTIFICATE



Packing & Delivery

PACKAGE & TRANSPORT



FAQ

1.What is your advantage?

We are the largest professional used construction machinery company here.

We have sufficient source of goods and guaranteed quality. Base on this, we are able to provide our clients with good condition machines at special price.

2. Quality Assurance

We provide all equipment main parts with six months assurance, such as the engine, transmission, and hydraulic pump. If there is any problem happen in these parts, please inform us we will supply the related parts by air or sending our technical person to inspect and do the repair.

3. Can you satisfy my special requirement?

Definitely! We are direct manufacture and we can discuss the particable plan and procuce it as your request

4. How to guarantee customers get the goods smoothly after they pay ?

We had joined the trade assurance. you can place the order by trade assurance, and the deposit will given to Alibaba. if we don't delivery products on time, the deposit will return to you.

5. How can customers make visit and checking in China ?

We arrange everything ready for your journey in China, welcome your happy visit!



Shanghai Yw Engineering Machinery Co., Ltd



13818031847



yw1211@yuweimachinery.com



yuweimachinery.com

NO.680 YONGDE ROAD, MINHANG DISTRICT, SHANGHAI 200241, CHINA