



## 10 T Operating Weight Used BOMAG BW 202 AHD-2 Road Roller And Performance Guaranteed

Our Product Introduction

### Basic Information

- Place of Origin: Germany
- Price: \$13,000.00/units 1-2 units
- Packaging Details: Container (40HQ,20GP), Bulk Carrier, Flat-Rack(40FR,20FR);
- Supply Ability: 20 Acre/Acres per Week

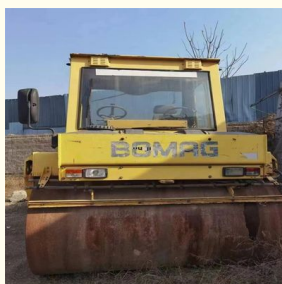


### Product Specification

- Applicable Industries: Building Material Shops, Manufacturing Plant, Machinery Repair Shops, Farms, Retail, Construction Works , Energy & Mining
- Showroom Location: Argentina, Morocco, Kenya, Philippines, Saudi Arabia, Indonesia, India, Brazil, Chile, Kazakhstan, UAE, Tajikistan, Thailand, Turkey, Sri Lanka, Bangladesh, Viet Nam, Pakistan, Nigeria, Peru, South Africa, Algeria, Mexico, Colombia
- Type: Tire Roller
- Static Linear Pressure: 46
- Travel Speed: 0~14km/h
- Year: 2018
- Grade Ability: Other
- Power: 72 KW
- Weight: 12500 KG
- Engine: Diesel Engine



### More Images



for more products please visit us on [yuweimachinery.com](http://yuweimachinery.com)

## PRODUCT DISPLAY







## Specification

Item	VALUE
Product Name	BOMAG 202AHD-2
Operation Weight	10700 KG
Location	Shanghai,China
Engine	Deutz
Power	72 KW
Place of Origin	Germany
Length	mm
Width	mm
Height	mm

## MAIN PRODUCTS



## Company Profile



We have been engaged in the second-hand construction machinery sales industry for more than 30 years.



Professionals do professional things. If you are looking for the most cost-effective,

Our main business is construction machinery, such as crawler excavator, wheel excavator, bulldozer, loader, grader, forklift, dump truck, transport truck, truck mixer, concrete pump, backhoe loader, truck crane, etc

With 30 years of industry experience.

24-hour online service.

Massive inventory

Fast delivery

After the order is placed with the advance deposit, 7-15 days for goods preparation

One year after-sales service period

VIEW





## WHY CHOOSE US



With 30 years of industry experience.



Massive inventory  
The best price and



After the order is placed with the advance deposit, 7-15 days for



## OUR CERTIFICATE



## Packing & Delivery

## PACKAGE & TRANSPORT



## FAQ

1.What is your advantage?

We are the largest professional used construction machinery company here.

We have sufficient source of goods and guaranteed quality. Based on this, we are able to provide our clients with good condition machines at special price.

## **2. Quality Assurance**

We provide all equipment main parts with six months assurance, such as the engine, transmission, and hydraulic pump. If there is any problem happen in these parts, please inform us we will supply the related parts by air or sending our technical person to inspect and do the repair.

## **3. Can you satisfy my special requirement?**

Definitely! We are direct manufacture and we can discuss the particable plan and procuce it as your request

## **4. How to guarantee customers get the goods smoothly after they pay ?**

We had joined the trade assurance. you can place the order by trade assurance, and the deposit will given to Alibaba. if we don't delivery products on time, the deposit will return to you.

## **5. How can customers make visit and checking in China ?**

We arrange everything ready for your journey in China, welcome your happy visit!



**Shanghai Yw Engineering Machinery Co., Ltd**



13818031847



yw1211@yuweimachinery.com



yuweimachinery.com

NO.680 YONGDE ROAD, MINHANG DISTRICT, SHANGHAI 200241, CHINA