



## 6x4 8x4 Tractor Dump Truck For Mining Transportation 10 Tires 12 Tires Shacman X3000

Our Product Introduction

for more products please visit us on [yuweimachinery.com](http://yuweimachinery.com)

### Basic Information

- Brand Name: Shacman
- Price: \$7,600.00/units 1-2 units
- Packaging Details: Container; Bulk Vessel; Ro-Ro; Flat Rack
- Supply Ability: 100 Unit/Units per Month

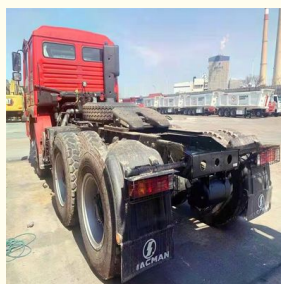


### Product Specification

- Condition: Used
- Steering: Left
- Horsepower: 351 - 450hp
- Emission Standard: Euro 3
- Segement: Heavy Truck
- Market Segement: Mining Transportation
- Engine Brand: WEICHAI
- Fuel Type: Diesel
- Engine Capacity: > 8L
- Cylinders: 6
- Gear Box Brand: SINOTRUCK
- Transmission Type: Manual
- Forward Shift Number: 10
- Reverse Shift Number: 2
- Maximum Torque(Nm): 2000-2500Nm



### More Images



## Product Description

### Product Description



Our Product Introduction

for more products please visit us on [yuweimachinery.com](http://yuweimachinery.com)







**Shacman F3000 6X4 tractor truck with 420hp Cummins Engine**

Drive system	6*4
Overall Dimensions L*W*H (mm)	6785×2490×3560
Curb weight (kg)	8800
Total mass (kg)	25000
Wheel base (mm)	3175+1400
Overhang (mm) (front/rear)	1485/725
Track width (mm) (front/rear)	2011/ 1800
Oil tank(L)	400L (ALLOY)

PRODUCT DISPLAY

## MAIN PRODUCTS



## MAIN PRODUCTS







We have been engaged in the second-hand construction machinery sales industry for more than 30 years.



Professionals do professional things. If you are looking for the most cost-effective,

Our main business is construction machinery, such as crawler excavator, wheel excavator, bulldozer, loader, grader, forklift, dump truck, transport truck, truck mixer, concrete pump, backhoe loader, truck crane, etc

With 30 years of industry experience.

24-hour online service.

Massive inventory

Fast delivery

After the order is placed with the advance deposit, 7-15 days for goods preparation

One year after-sales service period

VIEW





## WHY CHOOSE US



With 30 years of industry experience.



Massive inventory  
The best price and



After the order is placed with the advance deposit, 7-15 days for

## OUR CERTIFICATE



## Packing & Delivery

## PACKAGE & TRANSPORT



## FAQ

1.What is your advantage?



We are the largest professional used construction machinery company here.  
We have sufficient source of goods and guaranteed quality. Base on this, we are able to provide our clients with good condition machines at special price.

## **2. Quality Assurance**

We provide all equipment main parts with six months assurance, such as the engine, transmission, and hydraulic pump. If there is any problem happen in these parts, please inform us we will supply the related parts by air or sending our technical person to inspect and do the repair.

## **3. Can you satisfy my special requirement?**

Definitely! We are direct manufacture and we can discuss the particable plan and procuce it as your request

## **4. How to guarantee customers get the goods smoothly after they pay ?**

We had joined the trade assurance. you can place the order by trade assurance, and the deposit will given to Alibaba. if we don't delivery products on time, the deposit will return to you.

## **5. How can customers make visit and checking in China ?**

We arrange everything ready for your journey in China, welcome your happy visit!



Title goes here.

Semi-Automatic PET Bottle Blowing Machine Bottle Making Machine Bottle Moulding Machine PET Bottle Making Machine is suitable for producing PET plastic containers and bottles in all shapes.

Title goes here.

Semi-Automatic PET Bottle Blowing Machine Bottle Making Machine Bottle Moulding Machine PET Bottle Making Machine is suitable for producing PET plastic containers and bottles in all shapes.



**Shanghai Yw Engineering Machinery Co., Ltd**



13818031847



yw1211@yuweimachinery.com



yuweimachinery.com

NO.680 YONGDE ROAD, MINHANG DISTRICT, SHANGHAI 200241, CHINA