



7 ton almost new Japan imported crawler excavator machine used refurbish CAT 307 D

Our Product Introduction

for more products please visit us on yuweimachinery.com

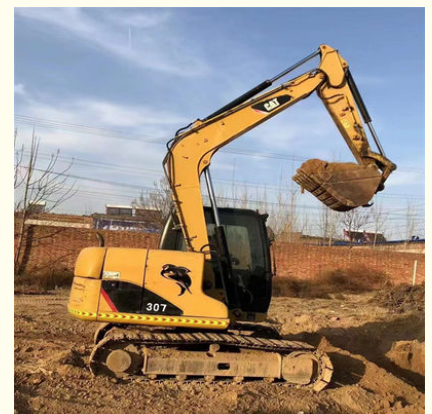
Basic Information

- Place of Origin: Japan
- Brand Name: Caterpillar
- Certification: Provided
- Model Number: Caterpillar 307D
- Minimum Order Quantity: 1 Unit
- Price: to be negotiation
- Packaging Details: Nude
- Delivery Time: 15 work days
- Payment Terms: T/T
- Supply Ability: 5 Units 30 Days

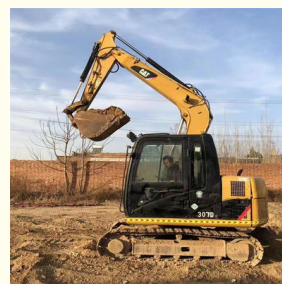
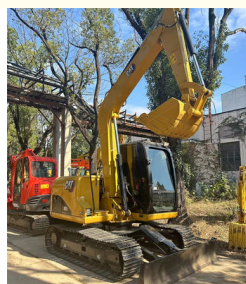


Product Specification

- Brand: Caterpillar
- Product Name: Caterpillar 307D
- Color: Original
- Location: Shanghai China
- Engine Type: 4M40TL
- Displacement: 2.83 L
- Track Width: 450 Mm
- Engine Power: 41.5 KW
- Dredging Depth: 4.05 M
- Weight: 7 T
- Max. Reach Horizontal: 6.29 M
- Cylinder Bore X Stroke: 95x100 Mm
- Engine Manuf.: Mitsubishi
- Highlight: refurbish CAT 307 D,
7 ton crawler excavator machine,
CAT 307 D crawler excavator machine



More Images



Product Description

Japan Used Crawler Excavator Caterpillar 307D

1. WITH **25 YEARS MANUFACTURING** AND EXPORTING EXPERIENCE
2. ALL PRODUCTS **WARRANTY 12 MONTHS** WITH FREE PARTS
3. OFFER **BEST PRICE** AND **COST-EFFECTIVE SHIPPING**
4. PROVIDE **24-HOUR** AFTER SALE SERVICE





Specification

Product Name	Caterpillar 307 D
Operation Weight	7000 KG
Location	Shanghai,China
Engine	Original
Power	41.5 KW
Place of Origin	Japan
Length	5700mm
Width	2300mm
Height	2630mm

Main Products

		Product
	Type	Model
Used Excavator	Komatsu	PC01 PC10MR PC35MR PC55MR PC130-7 PC200-6.PC200-7 PC200-8 PC210LC-7.PC220-6 PC220-8 PC300P PC350-7 PC400-7.PC400-8
	Caterpillar	303.5E 308D 320B 320BL 320C 320D 325B 325D 330B 330BL 312D 329D 329EL336EL 349E
	Hitachi	ZX55UR ZX60 ZX70-3 ZX75 ZX120 ZX130 ZX200 ZX210 ZX350-3 ZX350-5G EX60-5 EX120-5 EX100-3 EX200-1 EX200-2 EX200-3 EX200-5 EX220-5
	Doosan	DH55-7 DH60-7 210W-7 220LC-7 300LC-7 DX55 DX55-9C DX60 DX140LC DX225 DX300-9C
Used	Caterpillar	D3G D3C D4C D4H D4K D5K D6H D6M D6R D7R D8R D8N D8H D9N D9L

Bulldozer	Komat su	D65EX D85A D115A-2 D155A-5D275 D375 D475
	Shantui	SD13 SD16L SD16T SD22 SD32
Used Wheel Loader	Caterpi llar	936E 938G 950H 950GC966C 966D 966H 980F 980G 980H 988G 988H
	Komat su	WA320-5 WA380-5 WA380-6 WA470 WA500 WA600
Backhole loader	JCB	3CX 4CX
Used Grader	Caterpi llar	12G 14G 14H 16G120K 140K 140H
Dump trucks	HOWO	6x4(336) 6x4(375) 8x4(375)
Concret pump, Forklift, Compactor, Spare parts, Suction Sewage Truck, Tractor...		

Company Information



We have been engaged in the second-hand construction machinery sales industry for more than 25 years.

Our main business is construction machinery, such as crawler excavator, wheelexcavator, bulldozer, loader, grader, forklift, dump truck, transport truck, truck mixerconcrete pump, backhoe loader, truck crane, etc.

With 25 years of industry experience.

24-hour online service.

Massive inventory.

The best price and high-quality car conditions.

After the order is placed with the advance deposit, 7-15 days for goods preparationand efficient delivery.

One year after-sales service period.

Packing & Delivery

Container
Bulk Cargo
Flat rack



If you are looking for the most cost-effective.best service and high-quality machinery, please contact us immediately!



Shanghai Yw Engineering Machinery Co., Ltd



13818031847



yw1211@yuweimachinery.com



yuweimachinery.com

NO.680 YONGDE ROAD, MINHANG DISTRICT, SHANGHAI 200241, CHINA