



26 ton almost new Japan imported crawler excavator machine used refurbish Komatsu pc 240LC-8

Our Product Introduction

for more products please visit us on yuweimachinery.com

Basic Information

- Place of Origin: Japan
- Brand Name: Komatsu
- Certification: Provided
- Model Number: Komatsu pc 240LC-8
- Minimum Order Quantity: 1 Unit
- Price: to be negotiation
- Packaging Details: Nude
- Delivery Time: 15 work days
- Payment Terms: T/T
- Supply Ability: 5 Units 30 Days

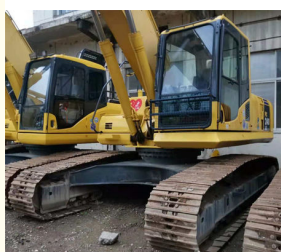
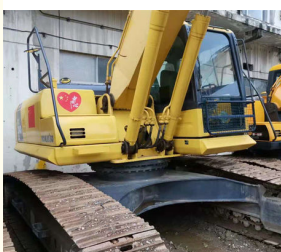


Product Specification

- Brand: Komatsu
- Product Name: Komatsu Pc 240LC-8
- Location: Shanghai China
- Color: Original
- Engine Type: SAA6D107E-3
- Displacement: 6.69 L
- Track Width: 600 Mm
- Max. Reach Horizontal: 10.97 M
- Dredging Depth: 7.32 M
- Revolutions At Max Torque: 2000 Rpm
- Engine Power: 134 KW
- Tear-out Force: 172 KN
- Bucket Capacity: 0.47 M³
- Undercarriage: LC
- Weight: 26.1 T



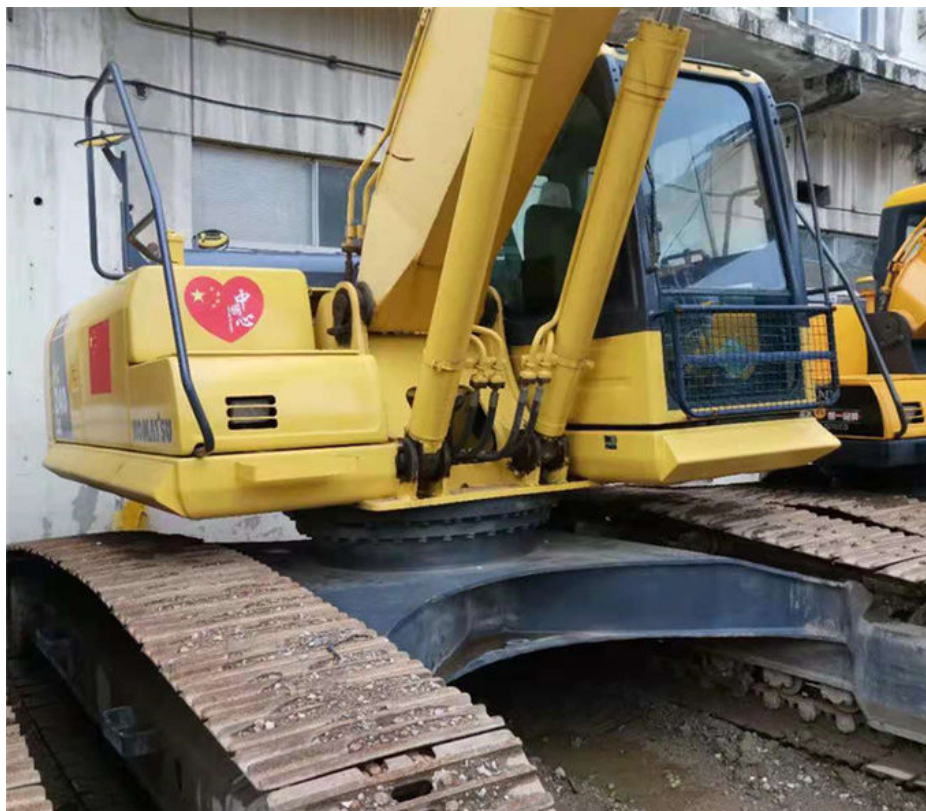
More Images



Product Description

Japan Used Crawler Excavator Komatsu Pc 240LC-8

1. WITH **25 YEARS MANUFACTURING** AND EXPORTING EXPERIENCE
2. ALL PRODUCTS **WARRANTY 12 MONTHS** WITH FREE PARTS
3. OFFER **BEST PRICE** AND **COST-EFFECTIVE SHIPPING**
4. PROVIDE **24-HOUR** AFTER SALE SERVICE



Specification

| | |
|------------------|----------------|
| Product Name | Komatsu PCLC-8 |
| Operation Weight | 26100 KG |
| Location | Shanghai,China |
| Engine | Original |
| Power | 134 KW |
| Place of Origin | Japan |
| Length | 9900mm |
| Width | 3200mm |
| Height | 3050mm |

Main Products

| | | Product |
|--|-------------|--|
| | Type | Model |
| Used Excavator | Komatsu | PC01 PC10MR PC35MR PC55MR PC130-7 PC200-6.PC200-7 PC200-8 PC210LC-7.PC220-6 PC220-8 PC300P PC350-7 PC400-7.PC400-8 |
| | Caterpillar | 303.5E 308D 320B 320BL 320C 320D 325B 325D 330B 330BL 312D 329D 329EL336EL 349E |
| | Hitachi | ZX55UR ZX60 ZX70-3 ZX75 ZX120 ZX130 ZX200 ZX210 ZX350-3 ZX350-5G EX60-5 EX120-5 EX100-3 EX200-1 EX200-2 EX200-3 EX200-5 EX220-5 |
| | Doosan | DH55-7 DH60-7 210W-7 220LC-7 300LC-7 DX55 DX55-9C DX60 DX140LC DX225 DX300-9C |
| Used Bulldozer | Caterpillar | D3G D3C D4C D4H D4K D5K D6H D6M D6R D7R D8R D8N D8H D9N D9L |
| | Komatsu | D65EX D85A D115A-2 D155A-5D275 D375 D475 |
| | Shantui | SD13 SD16L SD16T SD22 SD32 |
| Used Wheel Loader | Caterpillar | 936E 938G 950H 950GC966C 966D 966H 980F 980G 980H 988G 988H |
| | Komatsu | WA320-5 WA380-5 WA380-6 WA470 WA500 WA600 |
| Backhole loader | JCB | 3CX 4CX |
| Used Grader | Caterpillar | 12G 14G 14H 16G120K 140K 140H |
| Dump trucks | HOWO | 6x4(336) 6x4(375) 8x4(375) |
| Concret pump, Forklift, Compactor, Spare parts, Suction Sewage Truck, Tractor... | | |

Company Information



We have been engaged in the second-hand construction machinery sales industry for more than 25 years.

Our main business is construction machinery, such as crawler excavator, wheelexcavator, bulldozer, loader, grader, forklift, dump truck, transport truck, truck mixer concrete pump, backhoe loader, truck crane, etc.

With 25 years of industry experience.

24-hour online service.

Massive inventory.

The best price and high-quality car conditions.

After the order is placed with the advance deposit, 7-15 days for goods preparation and efficient delivery.

One year after-sales service period.

Packing & Delivery

Container
Bulk Cargo
Flat rack



If you are looking for the most cost-effective, best service and high-quality machinery, please contact us immediately!



Shanghai Yw Engineering Machinery Co., Ltd



13818031847



yw1211@yuweimachinery.com



yuweimachinery.com

NO.680 YONGDE ROAD, MINHANG DISTRICT, SHANGHAI 200241, CHINA